

DOCUMENT 00 01 10 TABLE OF CONTENTS**INTRODUCTORY INFORMATION**

Document	Title
00 01 01	Title Page
00 01 07	Seals Page
00 01 10	Table of Contents
00 01 15	List of Drawings

BIDDING REQUIREMENTS

Document	Title
00 11 13	Advertisement for Bids
00 11 19	Instructions to Bidders
00 21 14	Bid Submittal Vicinity Map
00 21 15	Project Site Campus Map
00 31 19	Reports, Surveys and Existing Conditions
00 41 00	Bid Form
00 43 10	Indemnity and Release Agreement
00 43 13	Bond Accompanying Bid
00 43 25	Substitution Request
00 43 33	Schedule of Major Equipment and Materials Suppliers
00 43 36	Subcontractors List
00 43 45	Escrow Agreement for Security Deposit
00 45 00	Bidder Certifications
00 45 14	Key Personnel
00 45 19	Non-Collusion Affidavit

CONTRACTING REQUIREMENTS

Document	Title
00 50 00	Notice to Proceed
00 51 00	Notice of Award
00 51 01	Notice of Intent to Award for Construction
00 52 00	Agreement
00 61 00	Construction Performance Bond
00 62 00	Construction Labor and Material Payment Bond
00 65 36	Guaranty
00 65 73	Agreement and Release of Any and All Claims

Table of Contents

CONDITIONS OF THE CONTRACT

Document	Title
00 71 00	General Conditions
00 73 00	Supplementary Conditions
00 73 17	Insurance
00 91 00	Addenda
00 91 01	Addendum 1

SPECIFICATIONS Division 1 - General Requirements

Section	Title
01 10 00	Summary of Work
01 21 00	Allowance
01 23 00	Alternates
01 26 00	Modification Procedures
01 29 00	Measurement and Payment
01 31 19	Project Meetings
01 32 16	Progress Schedules and Reports
01 32 19	Submittal Procedures
01 35 00A	Special Procedures – CEQA CAN
01 35 00B	Special Procedures – CEQA CSM
01 41 00	Regulatory Requirements
01 42 00	References and Definitions
01 45 23	Testing and Inspection
01 56 00	Site Security and Safety
01 60 00	Product Requirements
01 74 00	Cleaning
01 77 00	Contract Closeout
01 78 39	Project Record Documents
01 91 13	General Commissioning Requirements

Division 2 and Above – Technical Requirements

Section	Title
11 61 53A	Cañada College Theatrical Lighting Control System
11 61 53B	College of San Mateo House and Work Lighting Control System
26 00 00	Electrical Basic Requirements
26 05 19	Low-Voltage Electrical Power Conductors and Cables
26 05 29	Hangers and Supports for Electrical Systems
26 05 33	Raceways

26 05 34	Boxes
26 05 53	Identification for Electrical Systems
26 08 08	Electrical Commissioning Requirements
26 51 00	Lighting

END OF DOCUMENT

SECTION 00 91 01

ADDENDUM NO. 1

SUMMARY

This document includes requirements that clarify or supersede portions of the Project Manual. This Addendum is a Contract Document.

General

The following changes, additions and deletions shall be made to the following document(s); all other conditions shall remain the same.

I. QUESTIONS / NOTES:

- a. Cañada College: Signal conduit from new signal processor in Basement Electrical Room C174 up to existing equipment rack on stage right side of stage to be via existing conduit. Signal conduit from existing equipment rack on stage right side of stage to DMX Gateway in the Attic to be via new 3/4" conduit in existing conduit path as demonstrated in site walk.
- b. Cañada College: In addition to the access to the lower attic via an access door on one side of the house that we saw on the site walk, there is a similar access door to the lower attic available on the opposite site of the house.
- c. College of San Mateo: Signal conduit from new signal processor in Basement Electrical Room up to existing junction box on stage left side of stage to be via existing conduit. Signal conduit from existing junction box on stage left side of stage to DMX Gateway in the Attic to be via new 3/4" conduit in existing conduit path as demonstrated in site walk.

II. SPECIFICATIONS

Item No.	Reference	Description
A.	Document 00 01 10	Table of Contents V.2
B.	Document 00 91 01	Addendum 1

III. DRAWINGS

Item No.	Reference	Description
A	2, 3 & 4 on sheet TL7.0	College of San Mateo Only: At Houselight Keyswitch Station "HLK", Snapshot Stations "S" and House Light Stations "HL", change the faceplate finish to white with black designations, as requested by Owner
B	E0.1, E2.1, E2.2 for College of San Mateo	Drawings dated 9/16/2014 supersede those issued previously.
C	E01., E2.1, E2.2 for Cañada College	Drawings dated 9/16/2014 supersede those issued previously.
D	Analysis of changes...	Issued with revised drawings

END OF ADDENDUM

Note: analysis of changes made to bid set electrical dated 9/9/2014:

CSM:

- General Sheet Note "E" was added to sheet E2.1.

GENERAL SHEET NOTES

- A. COORDINATE EXACT LOCATION AND MOUNTING HEIGHT OF LUMINAIRES AND LIGHTING CONTROLS WITH THEATRICAL LIGHTING CONSULTANT PRIOR TO INSTALLATION.
- B. REFER TO THEATRICAL LIGHTING CONSULTANT DRAWINGS FOR ADDITIONAL INFORMATION AND LIGHTING CONTROL/CABLING REQUIREMENTS.
- C. REFER TO THEATRICAL LIGHTING CONSULTANT DRAWINGS FOR LUMINAIRE SCHEDULE AND SYMBOLS.
- D. EXISTING LUMINAIRES AND LIGHTING CONTROLS NOT SHOWN ON PLAN SHALL REMAIN U.O.N.
- E. PROVIDE DMX JUMPERS TO DAISY CHAIN DMX SIGNAL FROM LUMINAIRES TO LUMINAIRES FOR LUMINAIRE TYPE 'A', 'B', & 'D'.

Canada:

- General Sheet Note "E" was added to sheet E2.1. (See above)
- Sheet E2.1, Sheet Keynote #4 was removed and note #5 & #6 was moved up. Keynote tags also updated in plan.

SHEET KEYNOTES

- 1 DISCONNECT AND REUSE EXISTING LIGHTING CIRCUIT AS PART OF LED LUMINAIRE REPLACEMENT. LUMINAIRES TO BE RECONNECTED BACK TO EXISTING DIMMER RACK.
- 2 DISCONNECT AND REMOVE EXISTING LUMINAIRES AND PROVIDE NEMA L5-20R RECEPTACLE FOR CONNECTION TO NEW REPLACEMENT TYPE 'C' LUMINAIRES. REUSE EXISTING JUNCTION BOX AND CIRCUIT FOR NEW RECEPTACLE.
- 3 RELAMP/REPAIR EXISTING FLUORESCENT LUMINAIRES TO REMAIN.
- ~~4 REMOVE EXISTING LAMPS AND ABANDON FLUORESCENT LUMINAIRES IN PLACE.~~
- ~~#4~~ ✕ REPLACE EXISTING INCANDESCENT LAMP WITH LED RETROFIT LAMP IN EXISTING DOWNLIGHT.
- ~~#5~~ ✕ ADD ALTERNATE: DISCONNECT AND REMOVE EXISTING FLUORESCENT LUMINAIRES WITH NEW TYPE 'D' LUMINAIRES. RECONNECT COMPLETE TO EXISTING LIGHTING CIRCUIT AS REQUIRED TO PLACE BACK INTO SERVICE.

ELECTRICAL SYMBOL LIST

NOTE: This is a standard symbol list and not all items listed may be used.

Abbreviations

(E)	EXISTING
A	AMPERES, AMPER
AIC	AVAILABLE INTERRUPTING CAPACITY
AWG	AMERICAN WIRE GAUGE
C	CONDUIT, CLOSE, CONTROL
CB	CIRCUIT BREAKER
CLG	CEILING
COORD	COORDINATE
CU	COPPER
DIM	DIMENSION
DWG	DRAWING
EA	EACH
EL	ELEVATION
FT	FOOT, FEET
G, GND	GROUND
GFCI	GROUND FAULT CIRCUIT INTERRUPTER
GFI	GROUND FAULT INTERRUPTER
HT	HEIGHT
IN	INCH, INCHES
KVA	KILOVOLT AMPERES
KW	KILOWATT
LED	LIGHT EMITTING DIODE
MIN	MINIMUM
MT, MTD	MOUNT, MOUNTED
N/A	NOT APPLICABLE
NEC	NATIONAL ELECTRIC CODE
NEMA	NATIONAL ELECTRICAL MANUFACTURERS ASSOCIATION
NTS	NOT TO SCALE
OC	ON CENTER
REQD	REQUIRED
RM	ROOM
S	SWITCH
SHT	SHEET
TYP	TYPICAL
UL	UNDERWRITERS LABORATORIES
UON	UNLESS OTHERWISE NOTED
V	VOLTS, VOLTAGE
W	WITH
W/O	WITHOUT

Connections / Equipment

	OR	JUNCTION BOX
		WALL-MOUNTED JUNCTION BOX

General

	DEMOLISH
	EXISTING WORK
	NEW WORK
	DETAIL NUMBER AND SHEET LOCATION
	KEYED NOTE

Miscellaneous

	BRANCH CIRCUIT WIRING. ARROW INDICATES HOME RUN TO PANEL WITH CIRCUITS AS NOTED. WIRE SIZE IS #12 AWG MINIMUM UNLESS NOTED OTHERWISE. SHORT TICK MARKS INDICATE PHASE CONDUCTORS. LONG TICK MARKS INDICATE NEUTRAL CONDUCTORS. A SINGLE CURVED TICK MARK INDICATES INSULATED GREEN GROUND CONDUCTOR. SECOND CURVED TICK MARK INDICATES "ISOLATED GROUND" (GREEN INSULATION WITH YELLOW STRIPE) CONDUCTOR.
	BRANCH PANEL
	FLUSH WALL MOUNTED BRANCH PANEL
	GROUNDING POINT

Raceways

	CONDUIT CONCEALED IN WALL OR CEILING SPACE
	CONDUIT ROUTED BELOW FLOOR / GRADE
	CONDUIT/WIRING CONTINUATION
	CONDUIT/WIRING STUBBED OUT WITH END CAP OR INSULATED PLASTIC BUSHING

Switches and Receptacles

	SPECIAL PURPOSE RECEPTACLE. LETTER CODE DENOTES RECEPTACLE CONFIGURATION LX-XXR = NEMA CONFIGURATION TWIST-LOCK RECEPTACLE X-XXR = NEMA CONFIGURATION STRAIGHT BLADE RECEPTACLE P = PENDANT MOUNT WITH CORD GRIPS. VERIFY PENDANT LENGTH X = COORDINATE RECEPTACLE CONFIGURATION WITH EQUIPMENT BEING SUPPLIED
--	--

GENERAL ELECTRICAL NOTES

- A. DO NOT COMMENCE INSTALLATION OF ELECTRICAL SYSTEMS AND EQUIPMENT WITHOUT RELATED SHOP DRAWING APPROVALS.
- B. ELECTRICAL CIRCUITS SHALL BE INTERRUPTED ONLY WITH PRIOR WRITTEN CONSENT. SUCH INTERRUPTIONS SHALL BE PRECEDED BY ALL POSSIBLE PREPARATIONS BY THE CONTRACTOR WHICH ARE NECESSARY TO KEEP THE ELECTRICAL CIRCUITS OFF FOR A MINIMUM PERIOD IN AN EXPEDITIOUS MANNER PURSUANT WITH GOOD WORKMANSHIP. THIS INCLUDES CIRCUIT TRACING TO IDENTIFY THE ELECTRICAL LOAD BEING SERVED AND THE ORIGIN OF THE CIRCUIT.
- C. COORDINATE WITH OWNER SO THAT WORK CAN BE SCHEDULED NOT TO INTERRUPT OPERATIONS, NORMAL ACTIVITIES, BUILDING ACCESS, ACCESS TO DIFFERENT AREAS. THE OWNER WILL COOPERATE TO THE BEST OF THEIR ABILITY TO ASSIST IN A COORDINATED SCHEDULE, BUT WILL REMAIN THE FINAL AUTHORITY AS TO TIME OF WORK PERMITTED.
- D. COORDINATE THE EXACT LOCATION OF EXISTING UTILITIES AND EQUIPMENT PRIOR TO COMMENCEMENT OF WORK. COMPENSATE THE OWNER FOR DAMAGES CAUSED BY THE FAILURE TO LOCATE AND PRESERVE UTILITIES. REPLACE DAMAGED ITEMS WITH NEW MATERIAL TO MATCH EXISTING.
- E. REMOVE EXISTING LUMINAIRES, SWITCHES, RECEPTACLES, AND OTHER ELECTRICAL EQUIPMENT AND DEVICES AND ASSOCIATED WIRING FROM WALLS, CEILINGS, FLOORS, AND OTHER SURFACES SCHEDULED FOR REMODELING, RELOCATION, OR DEMOLITION UNLESS SHOWN AS RETAINED OR RELOCATED ON DRAWINGS.
- F. MAINTAIN ELECTRICAL CONTINUITY OF EXISTING SYSTEMS. REMOVE OR RELOCATE ELECTRICAL BOXES, CONDUIT, WIRING, EQUIPMENT, LUMINAIRES, AND THE LIKE, AS REQUIRED IN REMOVED OR REMODELED AREAS IN THE EXISTING CONSTRUCTION AFFECTED BY THIS WORK.
- G. REMOVE AND RESTORE WIRING WHICH SERVES USABLE EXISTING OUTLETS CLEAR OF THE CONSTRUCTION OR DEMOLITION.
- H. IF EXISTING JUNCTION BOXES WILL BE MADE INACCESSIBLE, OR IF ABANDONED OUTLETS SERVE AS FEED THROUGH BOXES FOR OTHER EXISTING ELECTRICAL EQUIPMENT WHICH IS BEING RETAINED, PROVIDE NEW CONDUIT AND WIRE TO BYPASS THE ABANDONED OUTLETS.
- I. IF EXISTING CONDUITS PASS THROUGH PARTITIONS OR CEILING WHICH ARE BEING REMOVED OR REMODELED, PROVIDE NEW CONDUIT AND WIRE TO REROUTE CLEAR OF THE CONSTRUCTION OR DEMOLITION AND MAINTAIN SERVICE TO THE EXISTING LOAD.
- J. CONCEALED CONDUIT LOCATED IN CONCRETE WALLS OR HARDBOARD CEILING SPACES MAY BE ABANDONED IN PLACE, REMOVE CONDUCTORS AND TAG ABANDONED CONDUITS WITH CORRESPONDING SYSTEM AND TERMINATION POINT. CUT AND CAP ABANDONED CONDUIT. DO NOT EXTEND STUBS ABOVE FINISHED FLOOR.
- K. EXTEND CIRCUITING AND DEVICES IN EXISTING WALLS TO BE FURRED OUT.
- L. PROVIDE TEMPORARY SUPPORT FOR ELECTRICAL SYSTEMS THAT REMAIN IN PLACE.
- M. VERIFY EXACT LOCATION AND NUMBER OF EXISTING ELECTRICAL OUTLETS AND LUMINAIRES IN THE FIELD. LOCATIONS OF ITEMS SHOWN ON DRAWINGS AS EXISTING ARE PARTIALLY BASED ON RECORD AND OTHER DRAWINGS WHICH MAY CONTAIN ERRORS. VERIFY THE ACCURACY OF THE INFORMATION SHOWN PRIOR TO BIDDING AND PROVIDE SUCH LABOR AND MATERIAL AS IS NECESSARY TO ACCOMPLISH THE INTENT OF THE CONTRACT DOCUMENTS.
- N. REMOVE ABANDONED WIRING TO LEAVE SITE CLEAN.
- O. EXISTING LIGHTING WHICH IS TO REMAIN OR BE RELOCATED IS TO BE RELAMPED, REBALLASTED, AND CLEANED. LEAVE ALL LUMINAIRES IN PROPER WORKING ORDER. REPLACE DAMAGED OR BROKEN LENS AND/OR COMPONENTS.
- P. MAINTAIN ACCESS TO EXISTING ELECTRICAL INSTALLATIONS WHICH REMAIN ACTIVE. MODIFY INSTALLATION OR PROVIDE ACCESS PANEL AS APPROPRIATE.
- Q. WHERE DRAWINGS INDICATE EXISTING ELECTRICAL EQUIPMENT OR DEVICES TO BE RELOCATED AND/OR REUSED, REFURBISH THEM. THOROUGHLY CLEAN SUCH ITEMS. NOTIFY ARCHITECT OF ANY DEFECTS IN SUCH INSTALLATIONS. REPAIR ANY DAMAGE CAUSED BY DEMOLITION OR CONSTRUCTION PERFORMED UNDER THIS CONTRACT.
- R. PROVIDE UPDATED PANEL SCHEDULES AND DIRECTORIES THAT IDENTIFY EXISTING CIRCUITS AND NUMBER OF SPARE CIRCUITS AVAILABLE UPON COMPLETION OF DEMOLITION WORK.
- S. OFFER REMOVED LUMINAIRES, WIRING DEVICES, PANELBOARDS AND EQUIPMENT TO THE OWNER. IF OWNER CHOOSES TO RETAIN THESE ITEMS, RETURN SUCH ITEMS TO OWNER. CAREFULLY REMOVE AND DISPOSE OF ITEMS REJECTED BY OWNER FROM PROJECT SITE AND IN A LEGAL MANNER.
- T. RECONNECT EXISTING LUMINAIRES NOT SHOWN ON DRAWINGS AND AFFECTED DUE TO DEMOLITION TO NEAREST AVAILABLE EXISTING LIGHTING CIRCUIT ABLE TO TAKE THE ADDITIONAL LOAD.
- U. REFER TO SPECIFICATIONS FOR ADDITIONAL REQUIREMENTS.
- V. DRAWINGS AND SPECIFICATIONS COMPLIMENT EACH OTHER. REQUIREMENT BY EITHER INFERS REQUIREMENT BY BOTH.
- W. CONNECT EQUIPMENT AND DEVICES FURNISHED UNDER OTHER DIVISIONS OF THIS CONTRACT, BY OWNER OR BY OTHER CONTRACTS.
- X. UNLESS OTHERWISE NOTED, PROVIDE CONCEALED AND FLUSH MOUNTED INSTALLATION OF DEVICES AND EQUIPMENT IN AREAS.
- Y. PROVIDE SEPARATE EQUIPMENT GROUNDING CONDUCTOR IN 120 VOLT, MULTI-WIRE CIRCUITS.
- Z. FOR 120 VOLT, 20 AMP CIRCUITS, WHERE CIRCUIT DISTANCE FROM PANELBOARD TO FARTHEST DEVICE/FIXTURE EXCEEDS 75 FEET, PROVIDE #10 SIZE CONDUCTOR.
- AA. RUN ELECTRICAL CONDUIT CONCEALED AND PARALLEL TO BUILDING LINES. VERIFY WITH ARCHITECT.
- AB. RECEPTACLE OUTLETS SHALL COMPLY WITH CEC SECTION 210.7.
- AC. LIGHTS, SWITCHES AND CONTROL MECHANISMS SHALL COMPLY WITH CEC SECTION 404.
- AD. BRACE ELECTRICAL EQUIPMENT TO RESIST A HORIZONTAL FORCE THAT ACT IN ANY DIRECTION. COMPLY WITH TITLE 24 REQUIREMENTS.
- AE. INSTALL COMPLETE SYSTEM OF CONDUCTORS IN RACEWAY SYSTEM THROUGHOUT BUILDING FOR FEEDERS, BRANCH CIRCUITS, ETC.

SHEET INDEX

E0.1	SYMBOL LIST AND GENERAL NOTES - ELECTRICAL
E2.1	FLOOR PLAN - LIGHTING
E2.2	LIGHTING CONTROL FLOOR PLANS



Date Signed: 9/12/14

PROJECT: 2014.0380
CONTRACT: Jason Lau

INTERFACE ENGINEERING

717 Market Street,
Suite 500
Berkeley, CA 94710
Tel: 415.888.7240
Fax: 415.888.7289
www.interfaceengineering.com

LANDRY & BOGANS
THEATRE CONSULTANTS

733 W. Evelyn Ave. Mountain View, CA 94041
(650) 969-5195 Fax 650-4965
theatre@landb.com

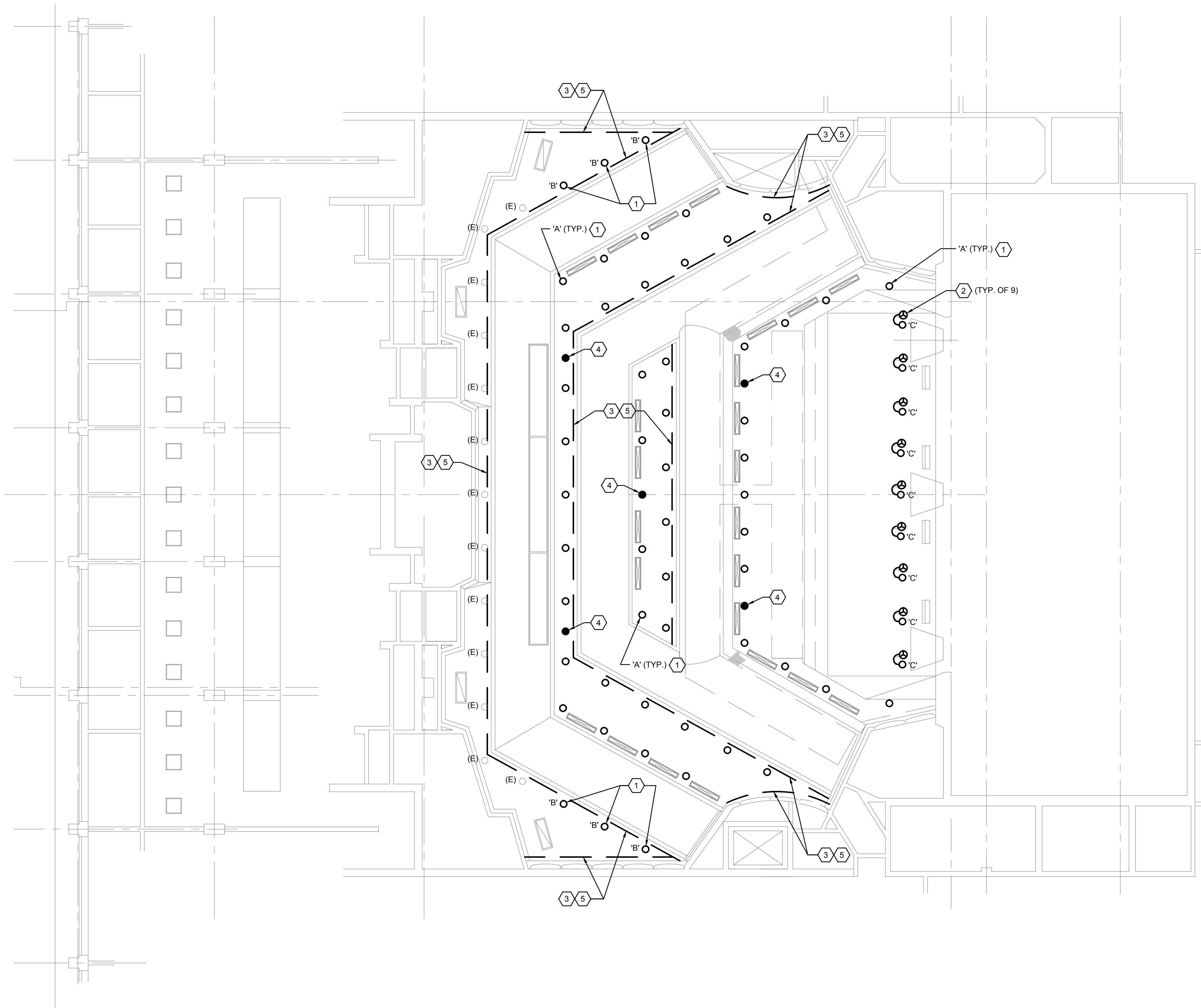
SAN MATEO COUNTY COMMUNITY COLLEGE DISTRICT
CAÑADA/COLLEGE OF SAN MATEO
THEATER HOUSE LIGHTING RETROFIT
CAÑADA COLLEGE - BUILDING 3
4200 FARM HILL BOULEVARD, REDWOOD CITY, CA 94061

REVISIONS

SHEET TITLE:
THEATER HOUSE
LIGHTING RETROFIT
SYMBOL LIST AND
GENERAL NOTES
- ELECTRICAL

SCALE: NO SCALE
DATE: Sept. 16, 2014

E0.1



1 FLOOR PLAN - LIGHTING
 0 4' 8' 16'
 SCALE: 1/8"=1'-0"

GENERAL SHEET NOTES

- A. COORDINATE EXACT LOCATION AND MOUNTING HEIGHT OF LUMINAIRES AND LIGHTING CONTROLS WITH THEATRICAL LIGHTING CONSULTANT PRIOR TO INSTALLATION.
- B. REFER TO THEATRICAL LIGHTING CONSULTANT DRAWINGS FOR ADDITIONAL INFORMATION AND LIGHTING CONTROL/CABLING REQUIREMENTS.
- C. REFER TO THEATRICAL LIGHTING CONSULTANT DRAWINGS FOR LUMINAIRE SCHEDULE AND SYMBOLS.
- D. EXISTING LUMINAIRES AND LIGHTING CONTROLS NOT SHOWN ON PLAN SHALL REMAIN, U.O.N.
- E. PROVIDE DMX JUMPERS TO DAISY CHAIN DMX SIGNAL FROM LUMINAIRES TO LUMINAIRES FOR LUMINAIRE TYPE 'A', 'B', & 'D'.

SHEET KEYNOTES

- 1. DISCONNECT AND REUSE EXISTING LIGHTING CIRCUIT AS PART OF LED LUMINAIRE REPLACEMENT. LUMINAIRES TO BE RECONNECTED BACK TO EXISTING DIMMER RACK.
- 2. DISCONNECT AND REMOVE EXISTING LUMINAIRES AND PROVIDE NEMA L5-20R RECEPTACLE FOR CONNECTION TO NEW REPLACEMENT TYPE 'C' LUMINAIRES. REUSE EXISTING JUNCTION BOX AND CIRCUIT FOR NEW RECEPTACLE.
- 3. RELAMP/REPAIR EXISTING FLUORESCENT LUMINAIRES TO REMAIN.
- 4. REPLACE EXISTING INCANDESCENT LAMP WITH LED RETROFIT LAMP IN EXISTING DOWNLIGHT. (TYPICAL OF 5 EMERGENCY LUMINAIRES)
- 5. **ADD ALTERNATE:** DISCONNECT AND REMOVE EXISTING FLUORESCENT LUMINAIRES WITH NEW TYPE 'D' LUMINAIRES. RECONNECT COMPLETE TO EXISTING LIGHTING CIRCUIT AS REQUIRED TO PLACE BACK INTO SERVICE.

INTERFACE ENGINEERING
 PROJECT CONTACT: Jason Lau
 2014.0330
 717 Market Street, Suite 500
 San Francisco, CA 94103
 TEL: 415.488.7240 FAX: 415.488.7289
 www.interfaceengineering.com

LANDRY & BOGGAN THEATRE CONSULTANTS
 733 W. Evelyn Ave. Mountain View, CA 94041
 (650) 969-5195 Fax 650-4965
 theaterlandb.com

SAN MATEO COUNTY COMMUNITY COLLEGE DISTRICT
 CAÑADA/COLLEGE OF SAN MATEO
 THEATER HOUSE LIGHTING RETROFIT
 CAÑADA COLLEGE - BUILDING 3
 4200 FARM HILL BOULEVARD, REDWOOD CITY, CA 94061

REVISIONS

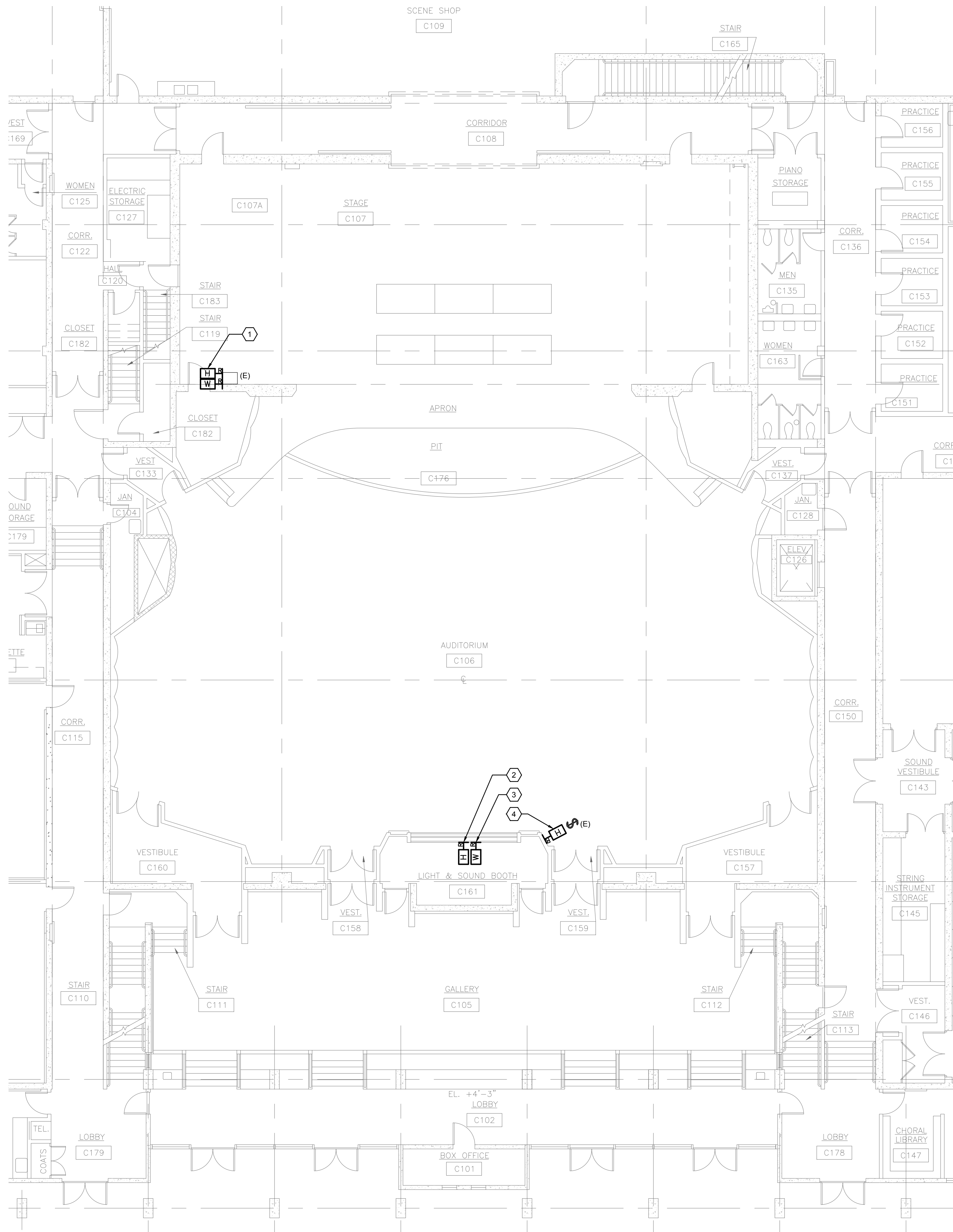
SHEET TITLE:
THEATER HOUSE LIGHTING RETROFIT FLOOR PLAN - LIGHTING

SCALE: 1/8" = 1'-0"
 DATE: Sept. 16, 2014

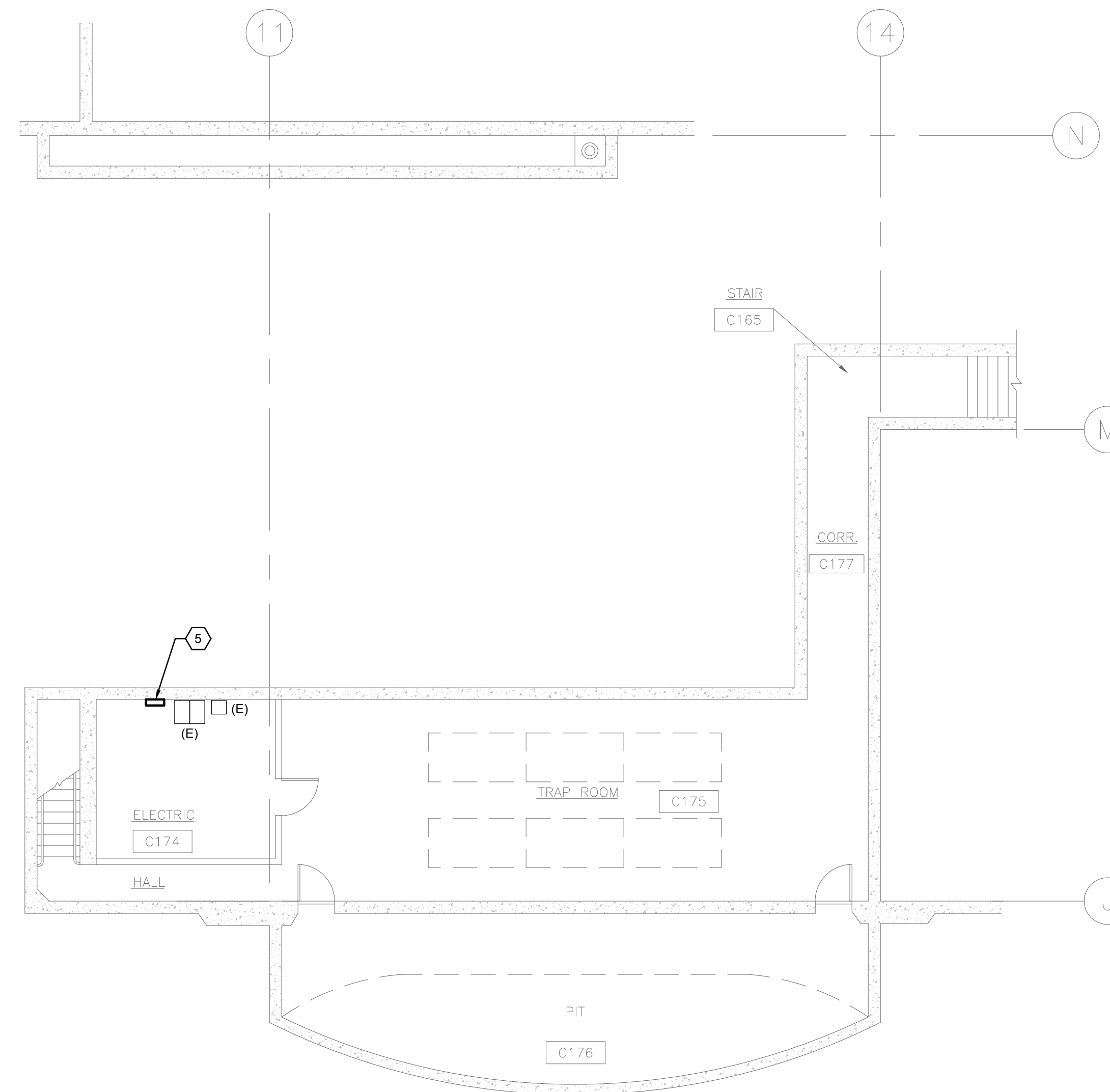
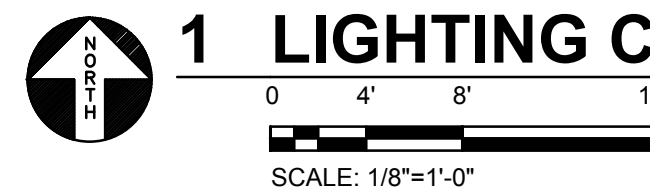


Date Signed: 9/12/14

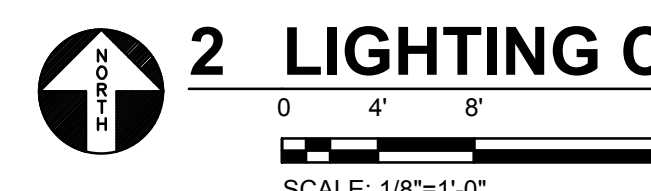
E2.1



1 LIGHTING CONTROL PLAN - MAIN LEVEL



2 LIGHTING CONTROL PLAN - ELECTRICAL ROOM



GENERAL SHEET NOTES

- A. COORDINATE EXACT LOCATION AND MOUNTING HEIGHT OF LIGHTING CONTROLS WITH THEATRICAL LIGHTING CONSULTANT PRIOR TO INSTALLATION.
- B. REFER TO THEATRICAL LIGHTING CONSULTANT DRAWINGS FOR ADDITIONAL INFORMATION AND LIGHTING CONTROL/CABLING REQUIREMENTS.

SHEET KEYNOTES

- 1. DISCONNECT AND REMOVE EXISTING RACK-MOUNTED HOUSE LIGHT CONTROL STATION AND WORKLIGHT CONTROL STATION AND REPLACE WITH NEW STAGE MANAGER'S PANEL WORKLIGHT/HOUSE LIGHT CONTROL PANEL. RECONNECT COMPLETE BACK TO EXISTING CIRCUIT TO PLACE BACK INTO SERVICE.
- 2. DISCONNECT AND REMOVE EXISTING HOUSE LIGHT SLIDER CONTROL STATION AND REPLACE WITH NEW HOUSE LIGHT MASTER STATION 'HLM'. PROVIDE NEW SURFACE BACK BOX AS REQUIRED. RECONNECT COMPLETE BACK TO EXISTING CIRCUIT TO PLACE BACK INTO SERVICE.
- 3. DISCONNECT AND REMOVE EXISTING WORK LIGHT CONTROL STATION AND REPLACE WITH NEW WORKLIGHT CONTROL STATION 'WL'. REUSE EXISTING BACK BOX. RECONNECT COMPLETE BACK TO EXISTING CIRCUIT TO PLACE BACK INTO SERVICE.
- 4. DISCONNECT AND REMOVE EXISTING HOUSE LIGHT CONTROL STATION AND REPLACE WITH NEW HOUSE LIGHT CONTROL STATION 'HL'. REUSE EXISTING BACK BOX AND LOCKING COVER. RECONNECT COMPLETE BACK TO EXISTING CIRCUIT TO PLACE BACK INTO SERVICE.
- 5. DISCONNECT AND REMOVE EXISTING ETC UNISON ER-4 EXTERNAL PROCESSING RACK AND REPLACE WITH NEW ETC UNISON ER2 EXTERNAL PROCESSING RACK WITH 4-PORT NETWORK SWITCH. RECONNECT COMPLETE BACK TO EXISTING CIRCUIT TO PLACE BACK INTO SERVICE.

2014.0330
PROJECT CONTACT
Jason Lau

717 Market Street
Suite 500
Berkeley, CA 94710
Tel: 415.888.7240
Fax: 415.888.7289
www.interfaceengineering.com

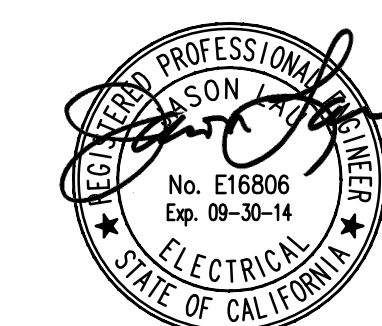
LANDRY & BOGANS
THEATRE CONSULTANTS
733 W. Evelyn Ave. Mountain View, CA 94041
(650) 969-5195 Fax 650-4965
theatre@landb.com

SAN MATEO COUNTY COMMUNITY COLLEGE DISTRICT
CAÑADA/COLLEGE OF SAN MATEO
THEATER HOUSE LIGHTING RETROFIT
CAÑADA COLLEGE - BUILDING 3
4200 FARM HILL BOULEVARD, REDWOOD CITY, CA 94061

REVISIONS

SHEET TITLE:
THEATER HOUSE
LIGHTING RETROFIT
LIGHTING CONTROL
FLOOR PLAN

SCALE: 1/8" = 1'-0"
DATE: Sept. 16, 2014



Date Signed: 9/12/14

E2.2

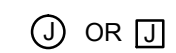


ELECTRICAL SYMBOL LIST

NOTE: This is a standard symbol list and not all items listed may be used.


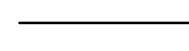

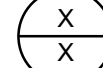
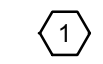
Abbreviations

(E)	EXISTING
A	AMPERES, AMPER
AIC	AVAILABLE INTERRUPTING CAPACITY
AWG	AMERICAN WIRE GAUGE
C	CONDUIT, CLOSE, CONTROL
CB	CIRCUIT BREAKER
CLG	CEILING
COORD	COORDINATE
CU	COPPER
DIM	DIMENSION
DWG	DRAWING
EA	EACH
EL	ELEVATION
FT	FOOT, FEET
G, GND	GROUND
GFCI	GROUND FAULT CIRCUIT INTERRUPTER
GFI	GROUND FAULT INTERRUPTER
HT	HEIGHT
IN	INCH, INCHES
KVA	KILOVOLT AMPERES
KW	KILOWATT
LED	LIGHT EMITTING DIODE
MIN	MINIMUM
MT, MTD	MOUNT, MOUNTED
N/A	NOT APPLICABLE
NEC	NATIONAL ELECTRIC CODE
NEMA	NATIONAL ELECTRICAL MANUFACTURERS ASSOCIATION
NTS	NOT TO SCALE
OC	ON CENTER
REQD	REQUIRED
RM	ROOM
S	SWITCH
SHT	SHEET
TYP	TYPICAL
UL	UNDERWRITERS LABORATORIES
UNO	UNLESS OTHERWISE NOTED
V	VOLTS, VOLTAGE
W/	WITH
W/O	WITHOUT

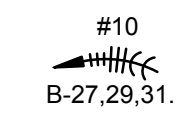


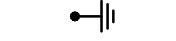
Connections / Equipment

	OR 	JUNCTION BOX
		WALL-MOUNTED JUNCTION BOX

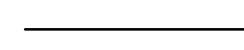
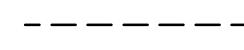
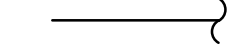
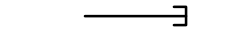
General

	DEMOLISH
	EXISTING WORK
	NEW WORK
	DETAIL NUMBER AND SHEET LOCATION
	KEYED NOTE

Miscellaneous

	#10 B-27,29,31.	BRANCH CIRCUIT WIRING. ARROW INDICATES HOME RUN TO PANEL WITH CIRCUITS AS NOTED. WIRE SIZE IS #12 AWG MINIMUM UNLESS NOTED OTHERWISE. SHORT TICK MARKS INDICATE PHASE CONDUCTORS. LONG TICK MARKS INDICATE NEUTRAL CONDUCTORS. A SINGLE CURVED TICK MARK INDICATES INSULATED GREEN GROUND CONDUCTOR. SECOND CURVED TICK MARK INDICATES 'ISOLATED GROUND' (GREEN INSULATION WITH YELLOW STRIPE) CONDUCTOR.
		BRANCH PANEL
		FLUSH WALL MOUNTED BRANCH PANEL
		GROUNDING POINT

Raceways

	CONDUIT CONCEALED IN WALL OR CEILING SPACE
	CONDUIT ROUTED BELOW FLOOR / GRADE
	CONDUIT/WIRING CONTINUATION
	CONDUIT/WIRING STUBBED OUT WITH END CAP OR INSULATED PLASTIC BUSHING

Switches and Receptacles

	DUPLEX RECEPTACLE
---	-------------------

GENERAL ELECTRICAL NOTES

- A. DO NOT COMMENCE INSTALLATION OF ELECTRICAL SYSTEMS AND EQUIPMENT WITHOUT RELATED SHOP DRAWING APPROVALS.
- B. ELECTRICAL CIRCUITS SHALL BE INTERRUPTED ONLY WITH PRIOR WRITTEN CONSENT. SUCH INTERRUPTIONS SHALL BE PRECEDED BY ALL POSSIBLE PREPARATIONS BY THE CONTRACTOR WHICH ARE NECESSARY TO KEEP THE ELECTRICAL CIRCUITS OFF FOR A MINIMUM PERIOD IN AN EXPEDITIOUS MANNER PURSUANT WITH GOOD WORKMANSHIP. THIS INCLUDES CIRCUIT TRACING TO IDENTIFY THE ELECTRICAL LOAD BEING SERVED AND THE ORIGIN OF THE CIRCUIT.
- C. COORDINATE WITH OWNER SO THAT WORK CAN BE SCHEDULED NOT TO INTERRUPT OPERATIONS, NORMAL ACTIVITIES, BUILDING ACCESS, ACCESS TO DIFFERENT AREAS. THE OWNER WILL COOPERATE TO THE BEST OF THEIR ABILITY TO ASSIST IN A COORDINATED SCHEDULE, BUT WILL REMAIN THE FINAL AUTHORITY AS TO TIME OF WORK PERMITTED.
- D. COORDINATE THE EXACT LOCATION OF EXISTING UTILITIES AND EQUIPMENT PRIOR TO COMMENCEMENT OF WORK. COMPENSATE THE OWNER FOR DAMAGES CAUSED BY THE FAILURE TO LOCATE AND PRESERVE UTILITIES. REPLACE DAMAGED ITEMS WITH NEW MATERIAL TO MATCH EXISTING.
- E. REMOVE EXISTING LUMINAIRES, SWITCHES, RECEPTACLES, AND OTHER ELECTRICAL EQUIPMENT AND DEVICES AND ASSOCIATED WIRING FROM WALLS, CEILINGS, FLOORS, AND OTHER SURFACES SCHEDULED FOR REMODELING, RELOCATION, OR DEMOLITION UNLESS SHOWN AS RETAINED OR RELOCATED ON DRAWINGS.
- F. MAINTAIN ELECTRICAL CONTINUITY OF EXISTING SYSTEMS. REMOVE OR RELOCATE ELECTRICAL BOXES, CONDUIT, WIRING, EQUIPMENT, LUMINAIRES, AND THE LINE, AS REQUIRED IN REMOVED OR REMODELED AREAS IN THE EXISTING CONSTRUCTION AFFECTED BY THIS WORK.
- G. REMOVE AND RESTORE WIRING WHICH SERVES USABLE EXISTING OUTLETS CLEAR OF THE CONSTRUCTION OR DEMOLITION.
- H. IF EXISTING JUNCTION BOXES WILL BE MADE INACCESSIBLE, OR IF ABANDONED OUTLETS SERVE AS FEED THROUGH BOXES FOR OTHER EXISTING ELECTRICAL EQUIPMENT WHICH IS BEING RETAINED, PROVIDE NEW CONDUIT AND WIRE TO BYPASS THE ABANDONED OUTLETS.
- I. IF EXISTING CONDUITS PASS THROUGH PARTITIONS OR CEILING WHICH ARE BEING REMOVED OR REMODELED, PROVIDE NEW CONDUIT AND WIRE TO REROUTE CLEAR OF THE CONSTRUCTION OR DEMOLITION AND MAINTAIN SERVICE TO THE EXISTING LOAD.
- J. CONCEALED CONDUIT LOCATED IN CONCRETE WALLS OR HARDBOARD CEILING SPACES MAY BE ABANDONED IN PLACE, REMOVE CONDUCTORS AND TAG ABANDONED CONDUITS WITH CORRESPONDING SYSTEM AND TERMINATION POINT. CUT AND CAP ABANDONED CONDUIT. DO NOT EXTEND STUBS ABOVE FINISHED FLOOR.
- K. EXTEND CIRCUITING AND DEVICES IN EXISTING WALLS TO BE FURRED OUT.
- L. PROVIDE TEMPORARY SUPPORT FOR ELECTRICAL SYSTEMS THAT REMAIN IN PLACE.
- M. VERIFY EXACT LOCATION AND NUMBER OF EXISTING ELECTRICAL OUTLETS AND LUMINAIRES IN THE FIELD. LOCATIONS OF ITEMS SHOWN ON DRAWINGS AS EXISTING ARE PARTIALLY BASED ON RECORD AND OTHER DRAWINGS WHICH MAY CONTAIN ERRORS. VERIFY THE ACCURACY OF THE INFORMATION SHOWN PRIOR TO BIDDING AND PROVIDE SUCH LABOR AND MATERIAL AS IS NECESSARY TO ACCOMPLISH THE INTENT OF THE CONTRACT DOCUMENTS.
- N. REMOVE ABANDONED WIRING TO LEAVE SITE CLEAN.
- O. EXISTING LIGHTING WHICH IS TO REMAIN OR BE RELOCATED IS TO BE RELAMPED, REBALLASTED, AND CLEANED. LEAVE ALL LUMINAIRES IN PROPER WORKING ORDER. REPLACE DAMAGED OR BROKEN LENS AND/OR COMPONENTS.
- P. MAINTAIN ACCESS TO EXISTING ELECTRICAL INSTALLATIONS WHICH REMAIN ACTIVE. MODIFY INSTALLATION OR PROVIDE ACCESS PANEL AS APPROPRIATE.
- Q. WHERE DRAWINGS INDICATE EXISTING ELECTRICAL EQUIPMENT OR DEVICES TO BE RELOCATED AND/OR REUSED, REFURBISH THEM, THOROUGHLY CLEAN SUCH ITEMS, NOTIFY ARCHITECT OF ANY DEFECTS IN SUCH INSTALLATIONS. REPAIR ANY DAMAGE CAUSED BY DEMOLITION OR CONSTRUCTION PERFORMED UNDER THIS CONTRACT.
- R. PROVIDE UPDATED PANEL SCHEDULES AND DIRECTORIES THAT IDENTIFY EXISTING CIRCUITS AND NUMBER OF SPARE CIRCUITS AVAILABLE UPON COMPLETION OF DEMOLITION WORK.
- S. OFFER REMOVED LUMINAIRES, WIRING DEVICES, PANELBOARDS AND EQUIPMENT TO THE OWNER. IF OWNER CHOOSES TO RETAIN THESE ITEMS, RETURN SUCH ITEMS TO OWNER, CAREFULLY REMOVE AND DISPOSE OF ITEMS REJECTED BY OWNER FROM PROJECT SITE AND IN A LEGAL MANNER.
- T. RECONNECT EXISTING LUMINAIRES NOT SHOWN ON DRAWINGS AND AFFECTED DUE TO DEMOLITION TO NEAREST AVAILABLE EXISTING LIGHTING CIRCUIT ABLE TO TAKE THE ADDITIONAL LOAD.
- U. REFER TO SPECIFICATIONS FOR ADDITIONAL REQUIREMENTS.
- V. DRAWINGS AND SPECIFICATIONS COMPLIMENT EACH OTHER. REQUIREMENT BY EITHER INFERS REQUIREMENT BY BOTH.
- W. CONNECT EQUIPMENT AND DEVICES FURNISHED UNDER OTHER DIVISIONS OF THIS CONTRACT, BY OWNER OR BY OTHER CONTRACTS.
- X. UNLESS OTHERWISE NOTED, PROVIDE CONCEALED AND FLUSH MOUNTED INSTALLATION OF DEVICES AND EQUIPMENT IN AREAS.
- Y. PROVIDE SEPARATE EQUIPMENT GROUNDING CONDUCTOR IN 120 VOLT, MULTI-WIRE CIRCUITS.
- Z. FOR 120 VOLT, 20 AMP CIRCUITS, WHERE CIRCUIT DISTANCE FROM PANELBOARD TO FARTHEST DEVICE/FIXTURE EXCEEDS 75 FEET, PROVIDE #10 SIZE CONDUCTOR.
- AA. RUN ELECTRICAL CONDUIT CONCEALED AND PARALLEL TO BUILDING LINES. VERIFY WITH ARCHITECT.
- AB. RECEPTACLE OUTLETS SHALL COMPLY WITH CEC SECTION 210.7.
- AC. LIGHTS, SWITCHES AND CONTROL MECHANISMS SHALL COMPLY WITH CEC SECTION 404.
- AD. BRACE ELECTRICAL EQUIPMENT TO RESIST A HORIZONTAL FORCE THAT ACT IN ANY DIRECTION. COMPLY WITH TITLE 24 REQUIREMENTS.
- AE. INSTALL COMPLETE SYSTEM OF CONDUCTORS IN RACEWAY SYSTEM THROUGHOUT BUILDING FOR FEEDERS, BRANCH CIRCUITS, ETC.

SHEET INDEX

E0.1	SYMBOL LIST AND GENERAL NOTES - ELECTRICAL
E2.1	FLOOR PLAN - LIGHTING
E2.2	LIGHTING CONTROL FLOOR PLANS



Date Signed: 9/12/14

PROJECT CONTRACT
 2014.0380
 Jason Lau
 INTERFACE ENGINEERING
 717 Market Street
 Suite 500
 San Francisco, CA 94103
 Tel: 415.488.7240
 Fax: 415.488.7289
 www.interfaceengineering.com

LANDRY & BOGAN
 THEATRE CONSULTANTS
 788 W. Evelyn Ave, Mountain View, CA 94041
 (650) 968-9185 Fax 968-6865
 theater@landb.com

SAN MATEO COUNTY COMMUNITY COLLEGE DISTRICT
 CAÑADA/COLLEGE OF SAN MATEO
 THEATER HOUSE LIGHTING RETROFIT
 COLLEGE OF SAN MATEO - BUILDING 3
 1700 WEST HILLSDALE BLVD., SAN MATEO, CA 94402

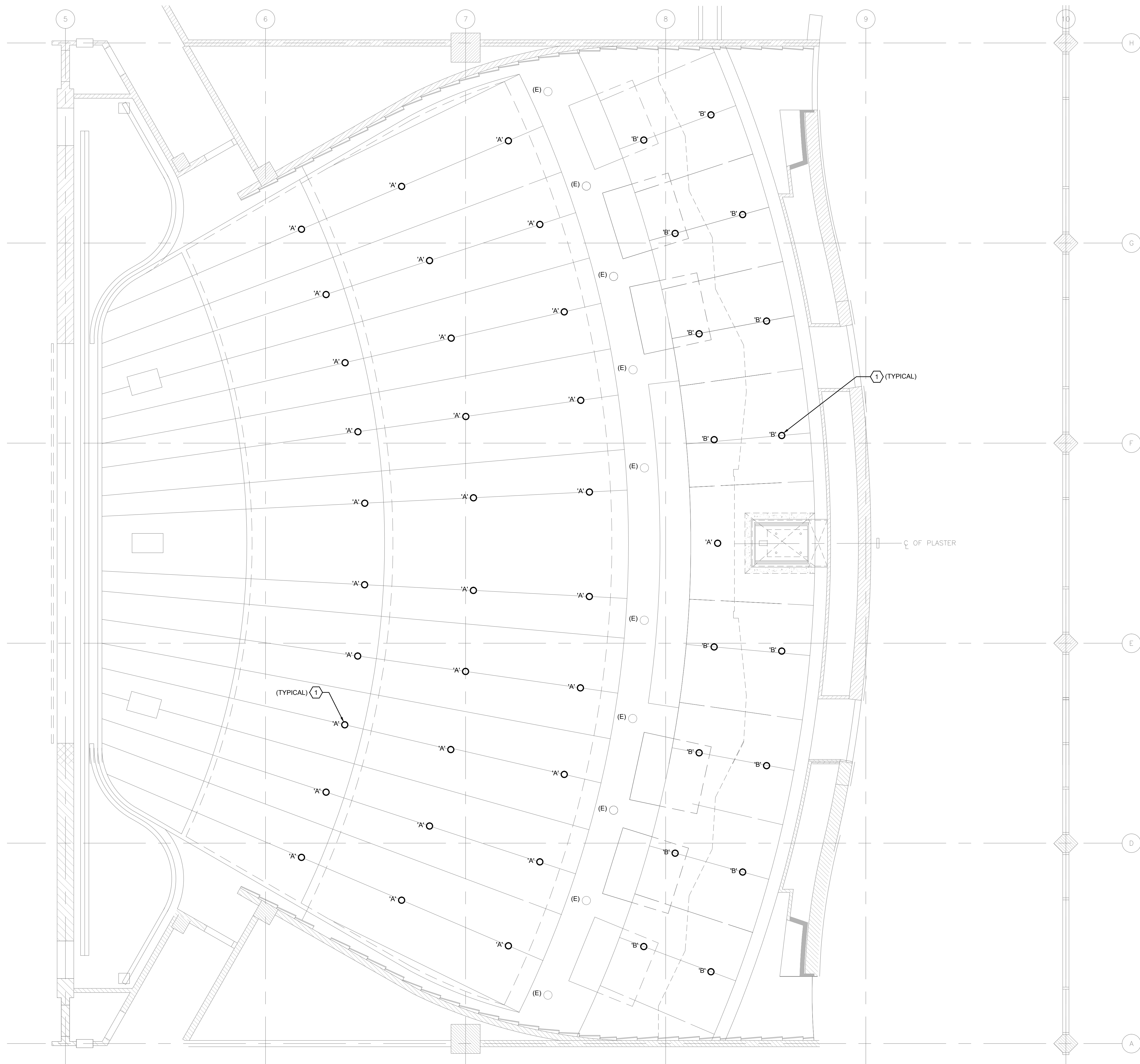
REVISIONS

.....

SHEET TITLE
**THEATER HOUSE LIGHTING RETROFIT
 SYMBOL LIST AND
 GENERAL NOTES
 - ELECTRICAL**

SCALE: NO SCALE
 DATE: Sept. 16, 2014

E0.1



1 FLOOR PLAN - LIGHTING
 0 2' 4' 8'
 SCALE: 1/4"=1'-0"

GENERAL SHEET NOTES

- A. COORDINATE EXACT LOCATION AND MOUNTING HEIGHT OF LUMINAIRES AND LIGHTING CONTROLS WITH THEATRICAL LIGHTING CONSULTANT PRIOR TO INSTALLATION.
- B. REFER TO THEATRICAL LIGHTING CONSULTANT DRAWINGS FOR ADDITIONAL INFORMATION AND LIGHTING CONTROL/CABLING REQUIREMENTS.
- C. REFER TO THEATRICAL LIGHTING CONSULTANT DRAWINGS FOR LUMINAIRE SCHEDULE AND SYMBOLS.
- D. EXISTING LUMINAIRES AND LIGHTING CONTROLS NOT SHOWN ON PLAN SHALL REMAIN, U.O.N.
- E. PROVIDE DMX JUMPERS TO DAISY CHAIN DMX SIGNAL FROM LUMINAIRE TO LUMINAIRE FOR LUMINAIRE TYPE 'A' AND 'B'.

SHEET KEYNOTES

- 1 DISCONNECT AND REUSE EXISTING LIGHTING CIRCUIT AS PART OF LED LUMINAIRE REPLACEMENT. LUMINAIRES TO BE RECONNECTED BACK TO EXISTING DIMMER RACK.

PROJECT 2014.0330
 CONTRACT Jason Lau

INTERFACE ENGINEERING

717 Market Street
 Suite 500
 San Francisco, CA 94103
 TEL: 415.488.7240
 FAX: 415.488.7289
 www.interfaceengineering.com

LANDRY & BOGAN
 THEATRE CONSULTANTS

733 W. Evelyn Ave. Mountain View, CA 94041
 (650) 968-5985 Fax 968-6865
 theatre@landrb.com

SAN MATEO COUNTY COMMUNITY COLLEGE DISTRICT
 CAÑADA/COLLEGE OF SAN MATEO
 THEATER HOUSE LIGHTING RETROFIT
 COLLEGE OF SAN MATEO - BUILDING 3
 1700 WEST HILLSDALE BLVD., SAN MATEO, CA 94402

REVISIONS

SHEET TITLE
**THEATER HOUSE
 LIGHTING RETROFIT
 FLOOR PLAN -
 LIGHTING**

SCALE: AS NOTED
 DATE: Sept. 16, 2014



Date Signed: 9/12/14

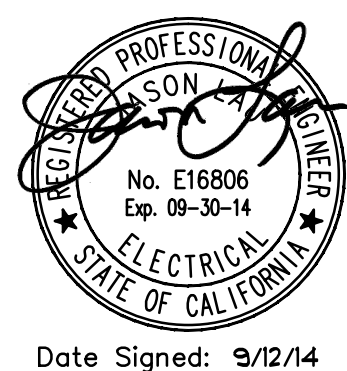
E2.1

REVISIONS

SHEET TITLE
THEATER HOUSE
LIGHTING RETROFIT
LIGHTING CONTROL
FLOOR PLANS

SCALE: AS NOTED
DATE: Sept. 16, 2014

E2.2

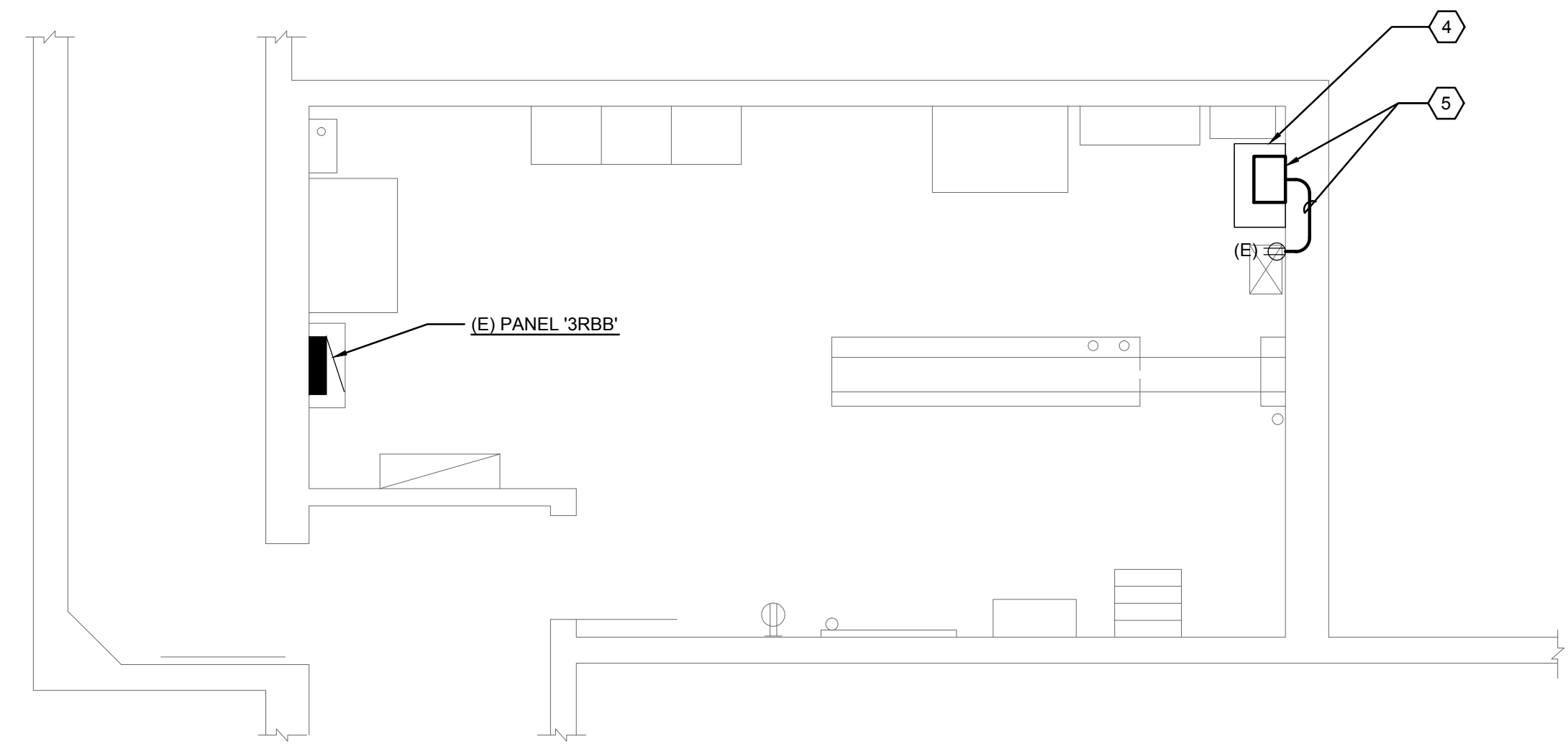


GENERAL SHEET NOTES

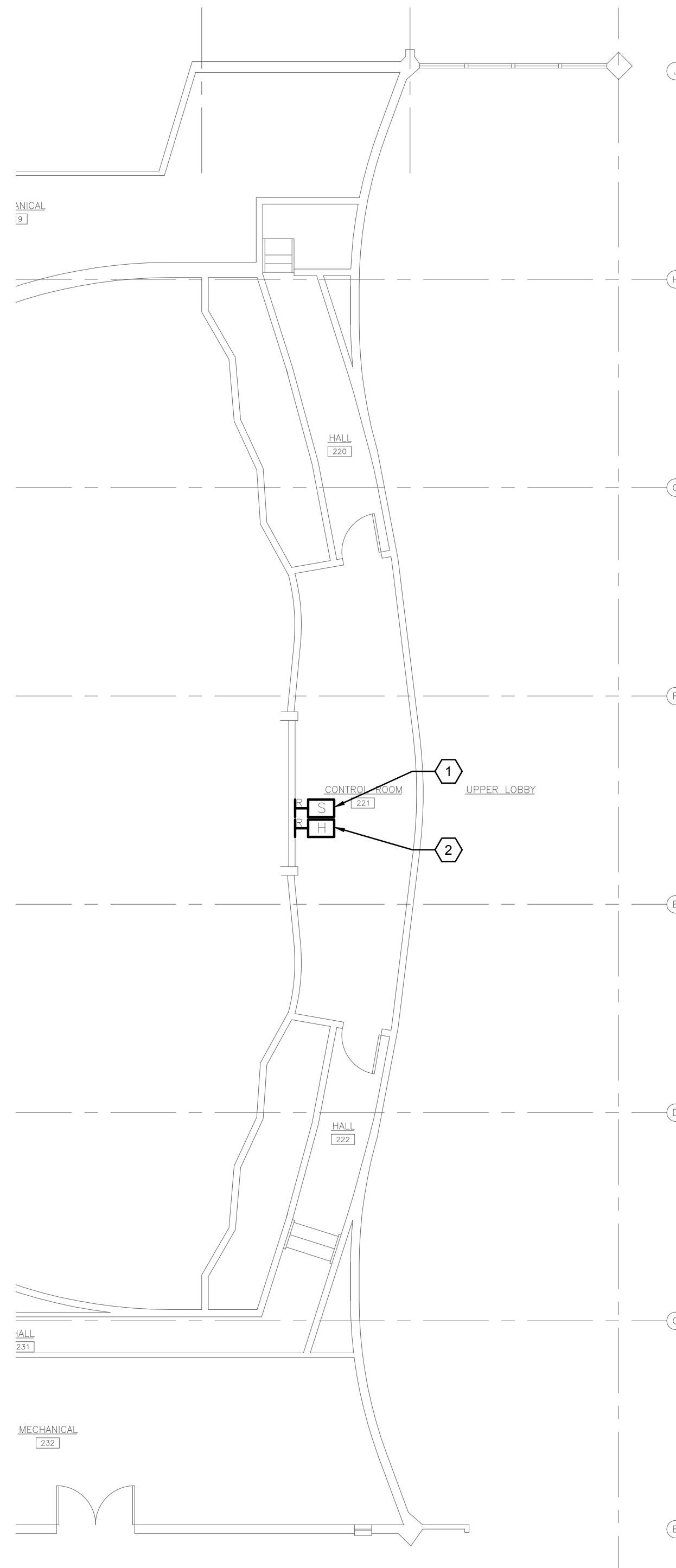
- COORDINATE EXACT LOCATION AND MOUNTING HEIGHT OF EQUIPMENTS AND LIGHTING CONTROLS WITH THEATRICAL LIGHTING CONSULTANT PRIOR TO INSTALLATION.
- REFER TO THEATRICAL LIGHTING CONSULTANT DRAWINGS FOR ADDITIONAL INFORMATION AND LIGHTING CONTROL/CABLING REQUIREMENTS.
- EXISTING EQUIPMENTS AND LIGHTING CONTROLS NOT SHOWN ON PLAN SHALL REMAIN, U.O.N.

SHEET KEYNOTES

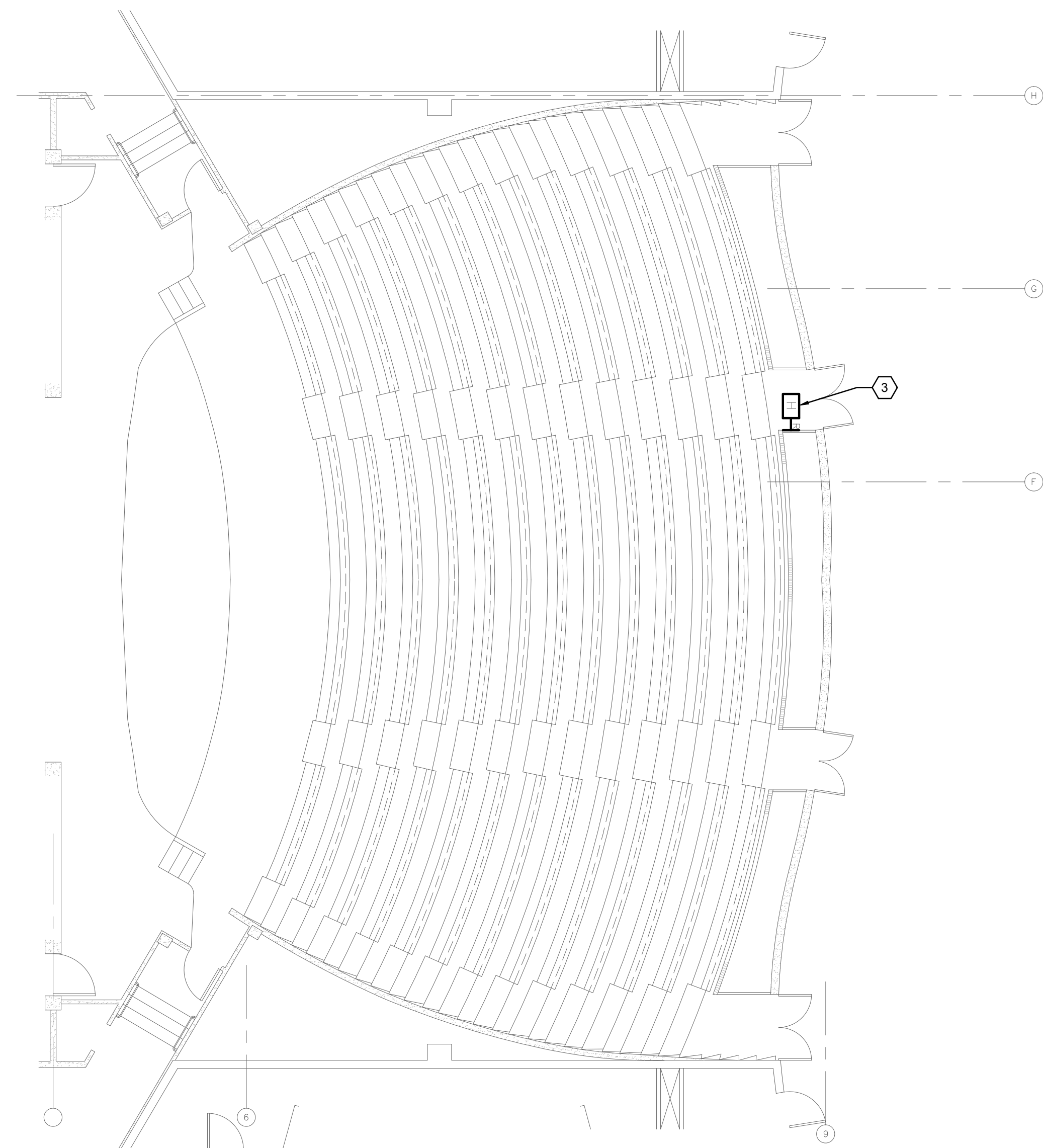
- DISCONNECT AND REMOVE EXISTING UNISON SINGLE-GANG 10-BUTTON SNAPSHOT STATION AND REPLACE WITH NEW STATION 'S'. RECONNECT COMPLETE BACK TO EXISTING CIRCUIT TO PLACE BACK INTO SERVICE.
- DISCONNECT AND REMOVE EXISTING UNISON SINGLE-GANG 5-BUTTON HOUSE/WORKLIGHT STATION AND REPLACE WITH NEW STATION 'HL'. RECONNECT COMPLETE BACK TO EXISTING CIRCUIT TO PLACE BACK INTO SERVICE.
- DISCONNECT AND REMOVE EXISTING HOUSE LIGHT KEYSWITCH CONTROL STATION AND REPLACE WITH NEW STATION 'HLK'. RECONNECT COMPLETE BACK TO EXISTING CIRCUIT TO PLACE BACK INTO SERVICE.
- EXISTING ETC UNISON ER-4 DR12 WALL MOUNTED DIMMER RACK TO REMAIN.
- INSTALL NEW ETC UNISON PARADIGM ERn2 SIGNAL PROCESSOR RACK WITH SMALL 4-PORT NETWORK SWITCH. INTERCEPT AND EXTEND EXISTING CIRCUIT '3RBB-1' TO NEW RACK AND CONNECT COMPLETE AS REQUIRED TO PLACE INTO SERVICE.



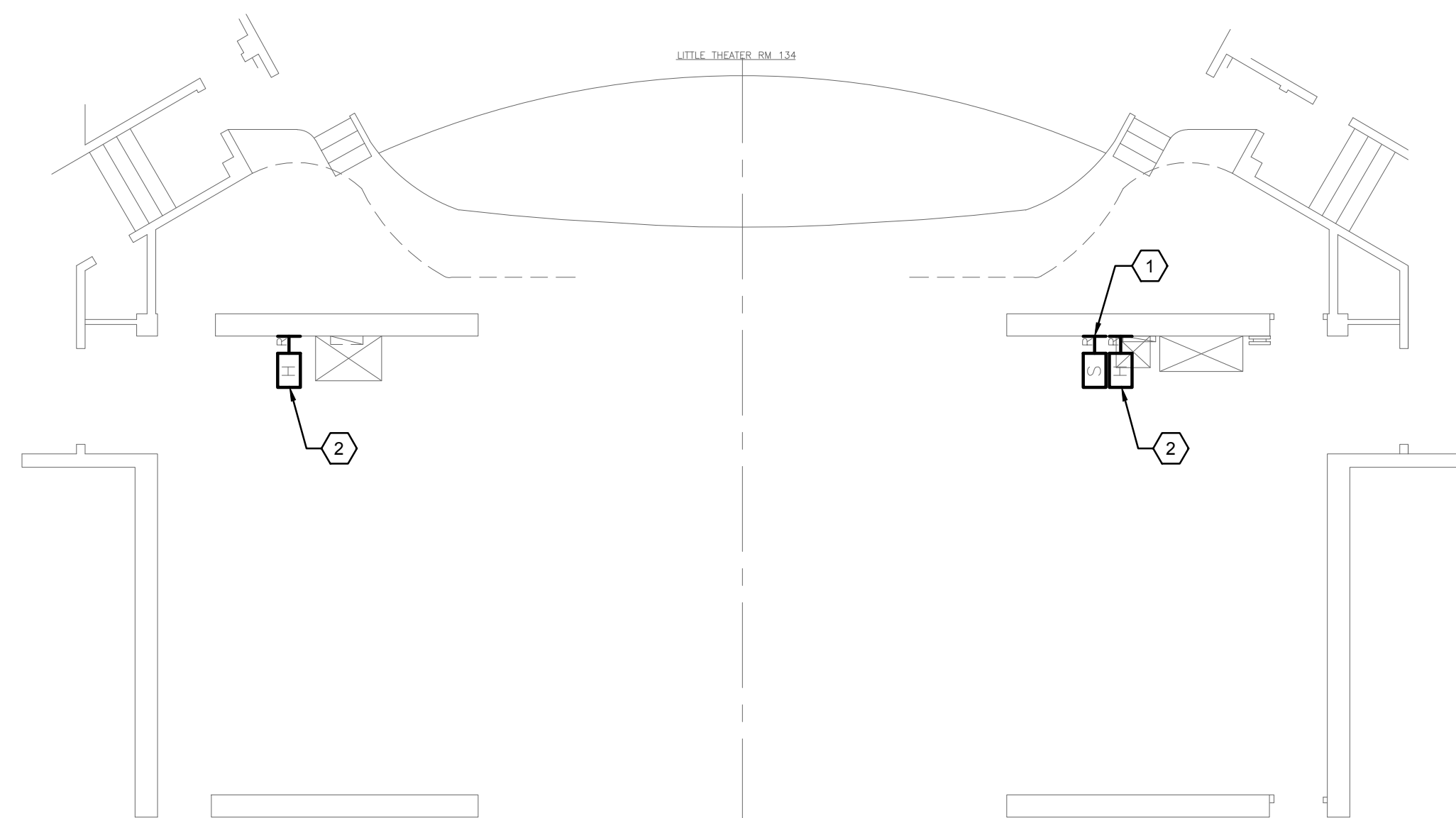
4 THEATER BASEMENT LEVEL ELECTRICAL ROOM PLAN
SCALE: 1/4"=1'-0"



2 CONTROL ROOM PLAN
SCALE: 1/8"=1'-0"



1 THEATER MAIN LEVEL AUDITORIUM PLAN
SCALE: 1/8"=1'-0"



3 THEATER MAIN LEVEL STAGE PLAN
SCALE: 1/8"=1'-0"